

- Simple operation
- Only one moving part
- Tight seal around trapped solids
- Optional solenoid control for remote use
- Optional booster relay for rough throttling
- Suitable for vacuum service
- Straight through flow
- Long cycle life

The Series AJ Pinch Valve features a simple, cost-effective design, perfect for dealing with problematic abrasive materials. The valve's split body is designed to allow quick and easy sleeve replacement, and is available in a variety of materials.

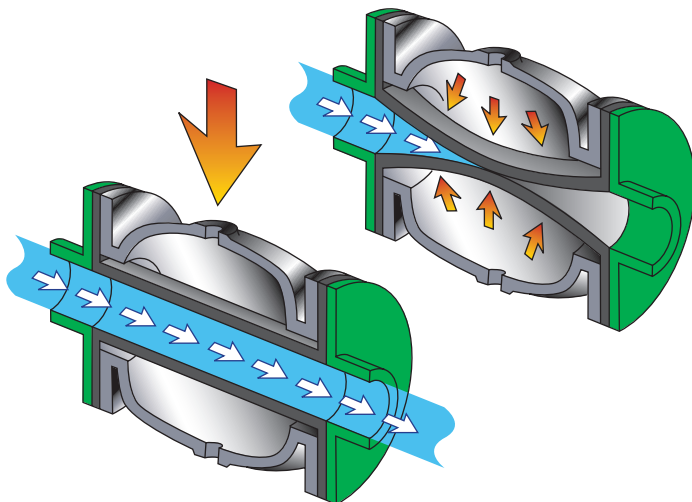
Replacement sleeves for the AJ Valve are available in several different types. Double wall sleeves are extra thick for greater wear resistance and longer life. Reduced port sleeves are also available. Food grade sleeves can be purchased for specialty applications. Please contact EVR or your local distributor for more information regarding replacement sleeves.



Typical Applications

Mining - Waste and Water Treatment - Food Processing - Mineral Processing

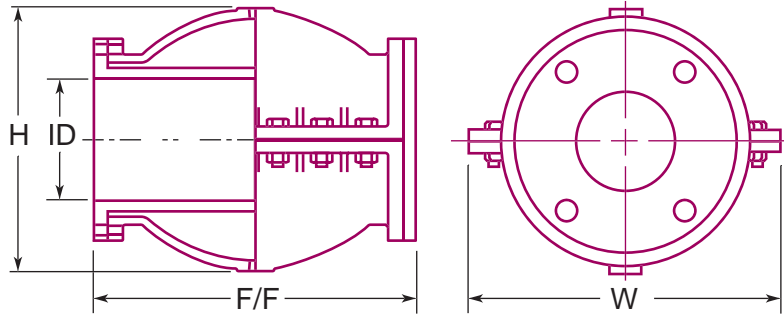
The body of the AJ Series valve is available in cast iron, aluminum, or stainless steel.



Series AJ Pinch Valves provide an effective means of flow control for hard-to-handle media such as slurries, sludges, and dry solids.

A flexible elastomer sleeve is contained in a cast metal housing. The annular cavity between the sleeve and the housing acts as the valve's actuator.

As pressurized air or water enters the housing, the sleeve is pinched shut. Venting the pressure allows the valve to resume full normal flow.



Operation of AJ Pinch Valves

To operate EVR AJ Pinch Valves, it takes 25 psi (+/- 10 psi) of differential pressure to close the valve tight. For example, if there is a flow of 15 psi running through the valve, expect to require a minimum of 40 psi on the control side to fully close the valve.

If possible, throttle the control air to give just enough pressure to operate the valve. The lower the pressure, the longer the sleeve will last.

Please note that different elastomer, sleeve, and application combinations may require higher differential pressures.

ID ¹	1/2	3/4	1	1-1/2	2	2-1/2	3	4	5	6	8	10	12	14	16	18	20	24
F/F ¹	3	4	5	7	9	10	12	12-1/2	16-1/2	20	22	24	26	30	34	39	43	51
H ¹	3-1/2	3-7/8	4-1/4	5	7-1/8	7-1/2	8-1/8	10-5/8	11-1/2	13-1/2	18	22-3/8	25	27-1/2	29-1/2	32-5/8	36-1/2	47
W ¹	4-1/2	5	5-3/4	6-1/2	8-1/2	9	10	11-3/4	11-3/4	15-1/4	17-1/2	19-3/8	21-1/2	24	25	28-1/4	29	37-1/2
Max. Work Pressure ²	125	125	125	125	125	125	125	100	75	75	75	50	50	50	50	25	25	25
Weight ³ (Cast Iron)	5	7	9	17	32	40	51	70	137	180	257	440	485	625	933	1300	1555	2525
Weight ³ (Aluminum)	2	4	6	8	15	20	23	34	60	88	120	195	252	291	340	560	670	790
Volume ⁴	.001	.002	.004	.012	.028	.054	.080	.166	.348	.529	1.032	1.815	2.583	3.880	6.579	9.404	12.001	20.116

1 - inches 2 - psi 3 - pounds 4 - ft³

Dimensions can be revised to suit custom specifications.

Elastomer Selection Guide

Ethylene Propylene Rubber (EPDM)

Most effective for applications involving water, steam or diluted acids.

Viton™ (FKM)

Resists solvents, halogenated hydrocarbons, oxygen, weather, ozone, oils and chemicals.

Buna N (NBR)

Resistant to kerosene, moderate chemicals, fats, oils, grease and many hydrocarbons.

Natural Rubber (NR)

Good abrasion resistance, tensile strength and resiliency. Also suitable when dealing with organic acids, alcohols, ketones and most moderate chemicals.

Hypalon™ (CSM)

Resists strong acids and bases, ozone, weathering, heat and oxidizing chemicals.

Butyl (CIIR)

Good resistance to animal and vegetable fats, strong and oxidizing chemicals, oils, heat and greases.

Neoprene (CR)

Generally resistant to oil and grease, moderate chemicals, fats, many hydrocarbons and ozone. Resistant to barnacle growth.

Valve Sizes Lgth.*

1"	1'
1.5" to 4"	2'
5"	3'
6' to 10"	4'
12" to 14"	5'
16"	6'
18"	7'
20" to 24"	8'

*Gasket length required for one valve.

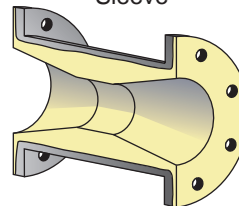
Diamond Seal Gasket

Whenever the Series AJ Valve is disassembled for inspection or maintenance, EVR recommends replacing the diamond seal gasket.

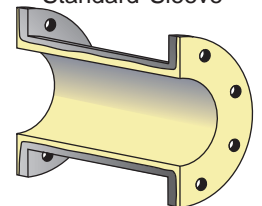
**When placing your order, please indicate sleeve material by appending elastomer abbreviation (CR, NR, etc) to the model name.
IE: Series AJ-CR**

Replacement Sleeves for the Series AJ Actuated Pinch Valve come in several different styles.

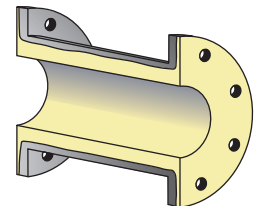
Reduced Port Sleeve



Standard Sleeve



Double Wall Sleeve



WARRANTY

All EVR products are guaranteed for one full year against defects resulting from faulty workmanship or materials. If any such product is found to be defective by reason of faulty workmanship or materials, upon written notice and return of the product, the defective product will be replaced by us free of charge, including the shipping charges for the replacement product. Claims for labour costs and other expenses required to replace such defective product, or to repair damage resulting from the use thereof will not be allowed by us. Our liability is limited to the price paid for the defective product. EVR Products shall not be bound by any warranty other than the above set forth unless such warranty shall be in writing. This literature is published in good faith and is believed to be reliable, however, EVR Products does not represent and/or warrant in any manner the above information and suggestions contained in this brochure. Data presented is the result of laboratory tests and field experience.

Distributed by:

ELASTO VALVE RUBBER PRODUCTS INC.

1691 Pioneer Road, Sudbury,
Ontario Canada P3G 1B2
Tel. (705)523-2026 - Fax. (705)523-2033
Toll Free 1-800-461-6331 (N.A.)
Website: www.evrproducts.com
E-mail: sales@evrproducts.com

ISO 9001 Certified

